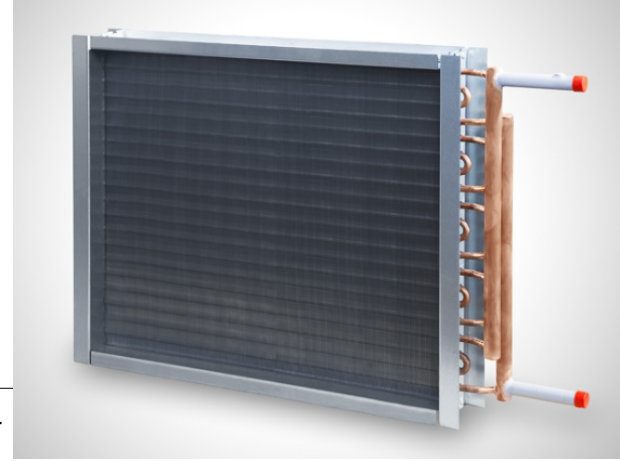




BAC 120 - 120 KW heater
910 x 980 mm



W 3S3 G 02 38 0859 254 019 1 A L -

TECHNICAL DATA :

Total capacity available.....:	[kW]	126
Air flow actual.....:	[m3/h]	10772
Air flow Standard.....:	[m3/h]	12000
Dry bulb air inlet.....:	[°C]	-10,0
Dry bulb air outlet.....:	[°C]	21,3
Air pressure drop.....:	[Pa]	91
Standard air velocity.....:	[m/s]	4,1
Fluid.....:		Water
Specific mass.....:	[kg/m3]	977
Specific heat.....:	[kj/kg.k]	4,19
Thermal conductivity.....:	[W/m.k]	0,661
Viscosity.....:	[Pas.sec]	0,0004
Total fluid pressure drop.....:	[kPa]	12
Inlet temperature.....:	[°C]	80,0
Outlet temperature.....:	[°C]	60,0
Fluid flow.....:	[m3/h]	5,52
Fluid velocity.....:	[m/s]	1,15

Pressure drop in headers exceeds 30% of the total fluid pressure drop. (33%)

Tubes type.....:		Smooth
Tube material.....:		Copper
Fin material.....:		Alu
Height/Width (finned).....:	[mm]	950,0 / 43,3
Connection inlet.....:	[mm]	43 / 48
Connection outlet.....:	[mm]	43 / 48 - Same side
Surface area.....:	[m2]	25,8
Circuit volume.....:	[dm3]	4,6
Gross weight.....:	[kg]	24,7